



# R32 Hiombask

Hybrid Electric Heat Pump Water Heater

# ECO-FRIENDLY



Drinking Water System  
Components - Lead Content  
[NSF/ANSI/CAN 372:2024]



- **The Smarter Refrigerant: R32**

Superior Eco-Profile: GWP of 675 is less than half that of R134a (GWP 1430), significantly reducing environmental impact.

Enhanced Efficiency: Higher latent heat enables more effective heat transfer for better performance.

- **Less Refrigerant Used**

Charge volume is reduced by **40%** compared with conventional refrigerant

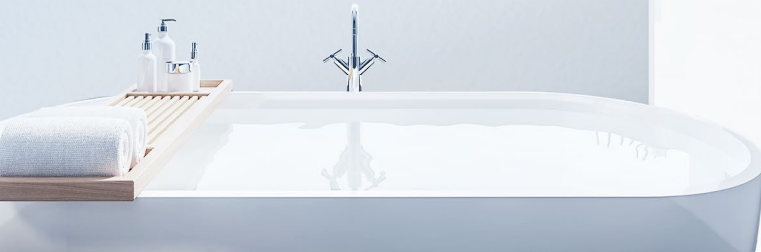


Note : Comparison based on 50-gallon model specifications

# ENERGY-SAVING

- **Compressor Dedicated for R32 Heat Pump**

- High-Efficiency PM Motor with low torque ripple. Reinforced discharge valve: 20% higher impact fatigue strength.
- Diamond-Like Coating (DLC) on sliding vane: 2x harder surface.
- Robust pump body: 35% less deformation for stable, long-life performance.



- **Maximum Heat, Minimum Space**

- **Triple-Efficiency Heat Transfer**

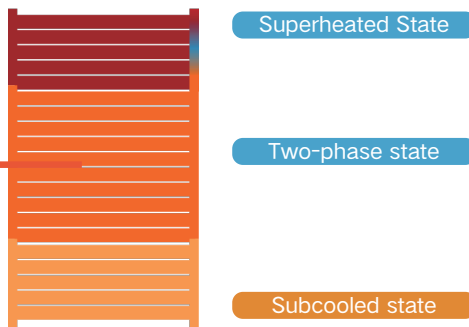
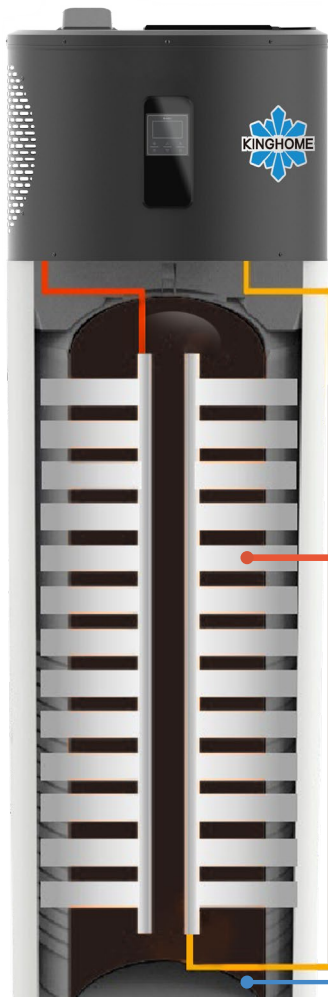
Individual heat exchange for superheated, two-phase, and subcooled refrigerant

- **Micro-Channel Technology**

High-density channels maximize heat transfer efficiency

- **45% More Compact**

Significant volume reduction versus standard copper tube systems



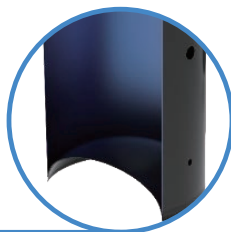
- **Domed Tank Bottom**

- **Convex Design**

Eliminates stagnant cold water

- **+15% FHR**

Delivers more usable hot water per cycle

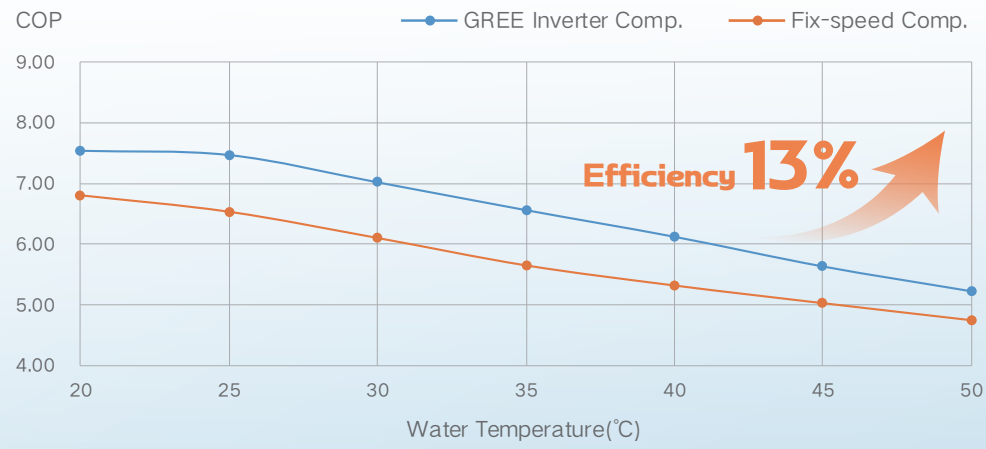
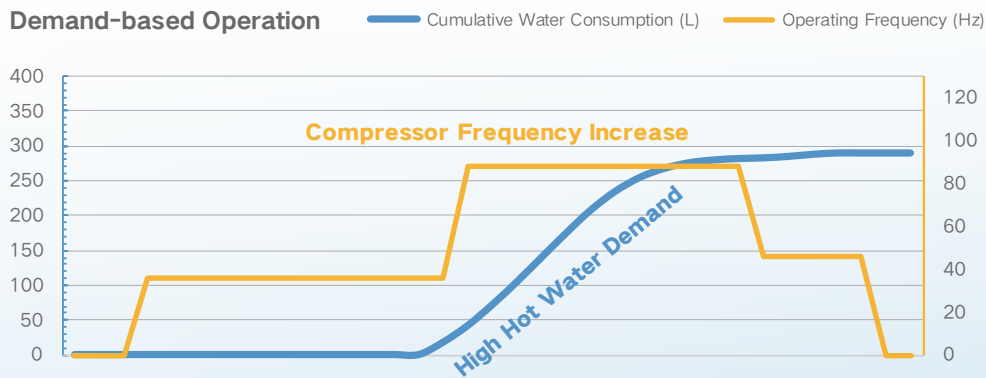




# Intelligent Compressor, Unbeatable Efficiency

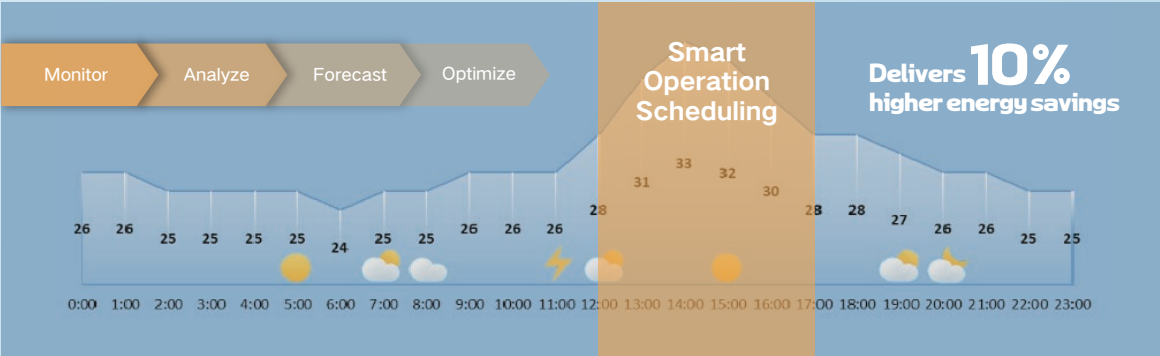
## Demand-Based Operation:

- Optimizes frequency for the perfect balance of power and efficiency.
- Boosted Heating: Automatically activates high-capacity mode during heavy use.
- 13% More Efficient: Superior energy savings compared to fixed-speed units.



# Intelligent Energy-Saving

Thanks to self-learning and self-forecasting functions, the intelligent operation is more energy-saving.





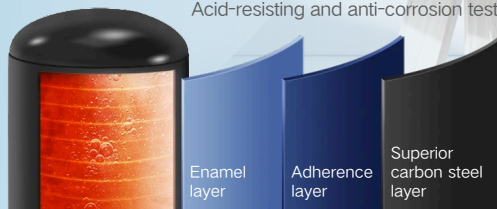
# RELIABLE & SAFE

- Crafted by **850°C**

Sintering forms a dense, pristine enamel surface

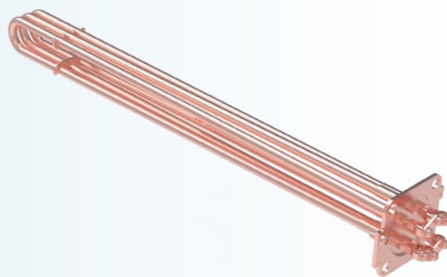
**1080<sub>h</sub>**

Acid-resisting and anti-corrosion test



- Long-life, Scale-Resisting Heater

Incoloy 825 elements with optimized surface load.



- Comprehensive Safety

**Triple-Layer Insulation:** Prevents electrical contact with moisture

**Featuring:** dry-fire, overpressure, overflow, leak, and auto-diagnosis protections.



- 70°C Auto-Sanitize

Programmable cycle eliminates harmful bacteria like *Staphylococcus aureus* and *Escherichia coli*

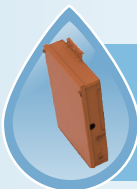


- Critical Hazard Prevention

Sealed potential ignition source & isolated design



Relay



Electrical control enclosure

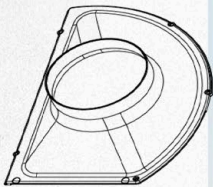


Thermostat

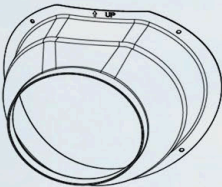
# CONVENIENT

Enjoy Convenient and Comfortable Life

## • Easy Installation



Air inlet duct adapter(optional)



Air outlet duct adapter (optional)

Power Supply

Air Outlet

Air Inlet

Hot Water Outlet

Cold Water Inlet



## • Intelligent App Control



Standard



ECO



BOOST



Electric Heating

Timer

ON

OFF

Water Temp



# SPECS

Parameters\Model		GRS-3.0Pd/TD50GANhA-D		GRS-3.0Pd/TD70GANhA-D	
First Hour Rating(FHR) <sup>(1)</sup>	gal	77		95	
Uniform Energy Factor(UEF) <sup>(1)</sup>	-	4		4	
Heating capacity <sup>(2)</sup>	W	2400		2400	
Power input <sup>(2)</sup>	W	570		570	
COP <sup>(2)</sup>	-	4.2		4.2	
Refrigerant Charge	oz (kg)	R32 / 19.4 (0.55)			
Heat pump operating range	°F (°C)	35.6~113 ( 2~45 )			
Maximum and minimum set water	°F (°C)	95~149 ( 35~65 )			
temperatures(The heat pump can					
heat water up to 60 ° C)					
Sound pressure level <sup>(3)</sup>	dB(A)	49		49	
Nominal volume of the tank	gal	50		70	
Rated volume of the tank	gal	54		68	
Dimensions(W×D×H)	in (mm)	26-1/8×25-1/2×66-15/16		26-1/8×25-1/2×76-1/8	
		(664×648×1700)		(664×648×1934)	
Ship dimensions(W×D×H)	in (mm)	29-1/4×29-1/4×74-3/16		29-1/4×29-1/4×83-1/4	
		(743×743×1885)		(743×743×2115)	
Unit Wt	LBS	240		265	
Approx. Ship Wt.	LBS	289		315	
Tank maximum working pressure	psi	150			
Power supply	-	208/240V ~ 60Hz			
Fan Motor Horsepower	HP	0.042			
		208V	240V	208V	240V
Rated Input Current of Compressor	A	5.95	4.85	5.95	4.85
MOP (Max. Rating of Overcurrent	A	30	30	30	30
Protective Device)					
MCA (Min. Circuit Ampacity)	A	30	30	30	30
Upper Electric Heater	W	3380	4500	3380	4500
Lower Electric Heater	W	3380	4500	3380	4500
Maximum Allowable Ratings	W	5728			
Connections for the domestic water circuit	-	3/4"		3/4"	

Note:

(1) FHR and UEF ratings are certified per 10 CFR Part 430 (updated as of 12/21/2023), tested in factory-default standard heating mode.

(2) Heating capacity and COP are measured under ECO mode at outdoor conditions of 20°CDB/15°CWB and water temperature from 15°C to 55°C.

(3) Sound pressure levels are tested in a semi-anechoic chamber.



**Note:**

Gree is committed to continuously improving its products to ensure the highest quality and reliability standards, and to meet local regulations and market requirements.

All features and specifications are subject to change without prior notice.

All images provided in this catalogue are used for illustration purposes only.

Copyright© Gree Electric Appliances, Inc. of Zhuhai. All rights reserved.

**GC-2512-04**

a member of **GREE** group

**GREE ELECTRIC APPLIANCES, INC. OF ZHUHAI**

Contact Add: West Jinji Rd, Qianshan, Zhuhai, Guangdong, China 519070

Tel: (+86-756) 852 2218 Fax: (+86-756) 8614998

Email: gree@cn.gree.com <https://global.gree.com>

**HONG KONG GREE ELECTRIC APPLIANCES SALES LIMITED**

Add: Unit 2612, 26/F, Mira Place Tower A 132 Nathan Road, TsimshaTsui, Kowloon, Hong Kong

Tel: (852) 3165 8898 Fax: (852) 3165 1029

**For Installation and Sales:**