

Mini-Split System for  
Versatile Spaces

12  
YEAR  
WARRANTY  
COMPRESSOR

12  
YEAR  
WARRANTY  
ALL PARTS



# MULTI-ZONE



UP TO  
21 SEER2  
10 HSPF2

COOLING RANGE

-30°C - 48°C

HEATING RANGE

-30°C - 24°C



Enjoy uninterrupted comfort with KINGHOME's Multi-zone series.

**Tailored Comfort:** Systems are designed to meet the unique comfort needs of each room.

**Supports up to 5 distinct areas:** Accommodates Multiple Spaces with independent control.

- G10 Inverter technology
- Can power up to 5 indoor units
- Low voltage start-up
- Fins with anti-corrosion coating

- Self-diagnosis function
- Automatic defrost function
- Heavy gauge steel cabinet
- R410a refrigerant



18K, 24K & 30K BTU/hr condensing units



36K & 42K BTU/hr condensing units

			KM18H50	KM18H503	KM24H50	KM30H50	KM36H50	KM42H50
Connectable Indoor Units	-		2	2 to 3	2 to 3	2 to 4	2 to 4	2 to 5
Power Supply	V/Hz/Ph		208-230 / 60 / 1					
<b>SYSTEM PERFORMANCE</b>								
Capacity	Cooling	BTU/hr	17 000 (7 000 – 19 600)	18 000 (7 000 – 22 000)	23 200 (7 500 – 31 400)	28 400 (8 190 – 34 100)	34 000 (8 871 – 35 826)	36 000 (8 871 – 40 944)
	Heating	BTU/hr	18 000 (7 000 – 19 600)	19 000 (7 000 – 22 500)	24 000 (7 500 – 31 400)	30 000 (8 190 – 40 900)	36 000 (8 871 – 44 356)	40 000 (8 871 – 46 062)
Power Input	Cooling	W	1 420	1 500	1 860	2 270	2 830	3 000
	Heating	W	1 380	1 360	1 800	2 250	2 960	3 020
SEER 2 (without / with duct)		BTU/W*hr	SEER 2 : 21.0 / 16.0	SEER 2 : 21.0 / 16.0	SEER 2 : 21.0 / 16.0	SEER 2 : 21.0 / 16.0	SEER 2 : 21.0 / 16.0	SEER 2 : 21.0 / 16.0
EER 2 (without / with duct)		BTU/W*hr	EER 2 : 12.0 / 11.0	EER 2 : 12.0 / 11.0	EER 2 : 12.5 / 11.0	EER 2 : 12.5 / 11.0	EER 2 : 12.0 / 11.0	EER 2 : 12.0 / 11.0
HSPF 2 (without / with duct)		BTU/W*hr	HSPF 2 : 10.0 / 8.0	HSPF 2 : 10.0 / 8.0	HSPF 2 : 10.0 / 8.0	HSPF 2 : 10.0 / 8.0	HSPF 2 : 10.0 / 8.0	HSPF 2 : 10.0 / 8.0
COP		W/W	3.82 / 3.3	4.09 / 3.17	3.91 / 3.4	3.91 / 3.4	3.56 / 3.3	3.88 / 3.5
Energy Star® (without / with duct)	-		YES / NO	YES / NO	YES / NO	YES / NO	YES / NO	NO / NO
<b>OUTDOOR UNIT SPECIFICATIONS</b>								
Ambient Temperature	Cooling	°C (°F)	-30°C to 48°C (-22°F to 118°F)					
	Heating	°C (°F)	-30°C to 24°C (-22°F to 75°F)					
Airflow Volume		m <sup>3</sup> /hr (CFM)	2300 (1354)	2300 (1354)	3800 (2236)	5800 (3413)	5800 (3413)	5800 (3413)
Sound Pressure Level		dB(A)	54	54	58	63	63	63
Minimum Circuit Ampacity (MCA)		A	15	15	19	23	29	29
Maximum Overcurrent Protection (MOP)		A	20	20	25	35	45	45
Dimensions	Width	mm (in)	822 (32-3/8)	822 (32-3/8)	964 (37-31/32)	1020 (40-5/32)	1020 (40-5/32)	1020 (40-5/32)
	Height	mm (in)	550 (21-21/32)	550 (21-21/32)	660 (26)	826 (32-1/2)	826 (32-1/2)	826 (32-1/2)
	Depth	mm (in)	352 (13-27/32)	352 (13-27/32)	402 (15-13/16)	427 (16-13/16)	427 (16-13/16)	427 (16-13/16)
Weight	Net	kg (lb)	35.0 (77.2)	35.5 (78.3)	52.0 (114.7)	69.0 (152.1)	78.0 (172.0)	79.0 (174.2)
	Gross	kg (lb)	37.5 (82.7)	38.0 (83.8)	56.5 (124.6)	76.0 (167.6)	85.0 (187.4)	86.0 (189.6)
<b>REFRIGERATION SYSTEM</b>								
Suction Line Size		mm (in)	ø 9.52 (3/8)	ø 9.52 (3/8)	ø 9.52 (3/8)	ø 9.52 (3/8)	ø 9.52 (3/8)	ø 9.52 (3/8)
Liquid Line Size		mm (in)	ø 6.35 (1/4)	ø 6.35 (1/4)	ø 6.35 (1/4)	ø 6.35 (1/4)	ø 6.35 (1/4)	ø 6.35 (1/4)
Maximum pipe length		m (ft)	20 (65.6)	20 (65.6)	20 (65.6)	25 (82.0)	25 (82.0)	25 (82.0)
Maximum total pipe length		m (ft)	40 (131.2)	40 (131.2)	60 (196.8)	80 (262.5)	80 (262.5)	100 (328.1)
Maximum elevation between IDUs		m (ft)	15 (49.2)	15 (49.2)	15 (49.2)	25 (82.0)	25 (82.0)	25 (82.0)
Maximum elevation between ODU and IDU		m (ft)	15 (49.2)	15 (49.2)	15 (49.2)	25 (82.0)	25 (82.0)	25 (82.0)
Refrigerant Type / Charge		kg (oz)	R410A / 1.3 (45.9)	R410A / 1.3 (45.9)	R410A / 2.4 (84.7)	R410A / 3.0 (105.8)	R410A / 3.7 (130.5)	R410A / 3.8 (134.0)
Limited Warranty	12 years residential, 5/7 years commercial compressor and parts warranty on registered models							

*Having separate temperature control over multiple zones. Making the space comfortable for everyone.*



## INDOOR UNITS

**KINGHOME** introduces layout flexibility by simultaneously powering up to five indoor units with one outdoor unit. For even greater flexibility, match your indoor units from our selection of wall-mounted units, mini floor consoles, slim ducts and ceiling cassettes to create your custom **Multi-zone** heating and cooling system.



### WALL-MOUNTED UNIT

The **CHARMO** Series ductless wall-mounted unit has a compact design that blends well with any décor, the perfect option for your home or office needs.



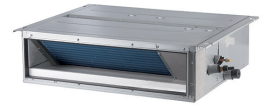
### MINI FLOOR CONSOLE

The mini-console is aesthetically pleasing and the perfect size for any room. It can be installed 15 cm (6 inches) off the floor and its front panel allows access to the filter for easy cleaning.



### CEILING CASSETTE

The ceiling cassette offers discreet performance through an innovative design. It is suitable for any room and can be easily installed in ceilings, leaving only a decorative grille visible.



### SLIM DUCT

The slim duct (high or low static) offers an extremely discreet and compact solution. In addition, this indoor unit frees up a maximum amount of space to minimize the impact on decor.



Remote control YAP1F7F(WiFi) (included)



Wired controller XK76 (in option)



Remote control YAP1F7F(WiFi) (included)



Remote control YAP1F7F(WiFi) (included)



Wired controller XK76 (in option)



Wired controller XK76 (in option)

- Multiple fan speed
- Swing louver control
- Turbo mode
- Control lock
- Dry coil mode for anti-mildew protection
- Recovery after a power failure
- Washable dust filters

- 4-way discharge air
- Multiple fan speed
- Swing louver control
- Comfortable Sleep mode
- Dry coil mode for anti-mildew protection
- Washable dust filters

- Decorative grille (included)
- 4-way discharge air
- Multiple fan speed
- Control lock
- Swing louver control
- Recovery after a power failure
- Internal condensate drain pump
- Sentry float switch
- Washable dust filters

- Low static pressure capability (for low static ducts)
- High static pressure capability (for high static ducts)
- Alternate return air from bottom or rear
- Internal condensate drain pump
- Sentry float switch
- Slim line construction (7-7/8" high)

CHARMO WALL-MOUNTED UNIT			KW05HQ19SDI	KW07HQ19SDI	KW09HQ19SDI	KW12HQ19SDI	KW18HQ19SDI	KW24HQ19SDI
Power Supply	V/Hz/Ph	208-230 / 60 / 1 (powered by the outdoor unit)						
Capacity	Cooling	BTU/hr	5000	7000	9100	12000	176000	22000
	Heating	BTU/hr	6000	8000	10000	12000	19100	24000
Energy Star®	—		NO	NO	NO	NO	NO	NO
Moisture Removal Capacity	L/hr (pt/hr)		0.30 (0.63)	0.60 (1.27)	0.80 (1.69)	1.40 (2.96)	1.80 (3.80)	2.50 (5.28)
Airflow Volume	m <sup>3</sup> /hr (CFM)		420/330/310/290/270/250/210 (247/194/182/171/159/147/124)	440/400/380/350/310/270/230 (259/235/224/206/182/159/135)	600/480/450/390/360/330/270 (353/282/265/230/212/194/159)	720/600/550/470/420/380/310 (424/353/324/277/247/224/182)	1050/870/800/740/670/570/480 (618/512/471/436/395/336/263)	150/1000/950/850/800/750/700 (1677/588/559/500/471/441/412)
Sound Pressure Level	dB(A)		38/33/31/29/28/26/24	39/36/35/33/30/27/24	41/37/34/32/31/28/26	47/39/38/35/33/32/27	50/46/44/42/40/36/32	51/47/45/42/40/38/36
Dimensions	Width	mm (in)	708 (27-7/8)	708 (27-7/8)	867 (34.134)	867 (34.134)	978 (38.5)	1078 (42-7/16)
	Height	mm (in)	260 (10-15/64)	260 (10-15/64)	276 (10.8)	276 (10.8)	333 (13.134)	333 (13-7/64)
	Depth	mm (in)	185 (7-9/32)	185 (7-9/32)	206 (8.11)	206 (8.11)	248 (9.66)	246 (9-11/16)
Weight	Net	kg (lb)	7.0 (15.4)	7.0 (15.4)	9.5 (20.9)	9.5 (20.9)	13.5 (29.8)	15.0 (33.1)
	Gross	kg (lb)	8.5 (18.7)	8.5 (18.7)	11.5 (25.3)	11.5 (25.3)	16 (35.3)	18.0 (39.7)

MINI FLOOR CONSOLE			KM09HEDI	KM12HEDI	KM18HEDI
Power Supply	V/Hz/Ph	208-230 / 60 / 1 (powered by the outdoor unit)			
Capacity	Cooling	BTU/hr	8 873	11 946	18 089
	Heating	BTU/hr	9 556	12 969	19 795
Energy Star®	—		YES	YES	YES
Moisture Removal Capacity	L/hr (pt/hr)		0.80 (1.69)	1.40 (2.96)	1.80 (3.80)
Airflow Volume	m <sup>3</sup> /hr (CFM)		500 / 430 / 410 / 330 / 280 / 230 (294 / 253 / 241 / 194 / 165 / 147)	600 / 520 / 481 / 400 / 360 / 280 (353 / 306 / 283 / 235 / 212 / 165)	650 / 620 / 550 / 410 / 320 (383 / 365 / 324 / 265 / 241 / 188)
Sound Pressure Level	dB(A)		40 / 38 / 36 / 33 / 30 / 27 / 25	42 / 40 / 38 / 37 / 35 / 32 / 27	48 / 46 / 44 / 41 / 37 / 35 / 32
Dimensions	Width	mm (in)	700 (27-9/16)	700 (27-9/16)	700 (27-9/16)
	Height	mm (in)	600 (23-5/8)	600 (23-5/8)	600 (23-5/8)
	Depth	mm (in)	215 (8-1/2)	215 (8-1/2)	215 (8-1/2)
Weight	Net	kg (lb)	15 (33)	15 (33)	15 (33)
	Gross	kg (lb)	18 (40)	18 (40)	18 (40)

CEILING CASSETTE			KM12HCKDI	KM18HCKDI	KM24HCKDI
Power Supply	V/Hz/Ph		208-230 / 60 / 1 (powered by the outdoor unit)		
Capacity	Cooling	BTU/hr	12000	14400	22800
	Heating	BTU/hr	13000	16000	27400
Energy Star®	—		YES	YES	YES
Moisture Removal Capacity	L/hr (pt/hr)		1.40 (2.96)	1.80 (3.80)	2.50 (5.28)
Airflow Volume	m³/hr (CFM)		560 / 520 / 450 (330 / 306 / 265)	670 / 590 / 450 (394 / 347 / 265)	1220 / 1100 / 880 (718 / 647 / 518)
Sound Pressure Level	dB(A)		44 / 41 / 38 / 34	47 / 45 / 41 / 35	47 / 45 / 41 / 36
Dimensions	Width	mm (in)	595 (23-1/2)	595 (23-1/2)	840 (33-1/16)
	Height	mm (in)	595 (23-1/2)	595 (23-1/2)	840 (33-1/16)
	Depth	mm (in)	241 (9-1/2)	241 (9-1/2)	241 (9-1/2)
Weight	Net	kg (lb)	20.0 (44.1)	20.0 (44.1)	26.0 (57.3)
	Gross	kg (lb)	24.0 (52.9)	24.0 (52.9)	32.0 (70.6)
DECORATIVE GRILLE SPECIFICATIONS			TF05	TF05	TF06
Dimensions	Width	mm (in)	620 (24-13/32)	620 (24-13/32)	950 (37-13/32)
	Height	mm (in)	620 (24-13/32)	620 (24-13/32)	950 (37-13/32)
	Depth	mm (in)	47.5 (1-7/8)	47.5 (1-7/8)	52 (2-3/64)
Weight	Net	kg (lb)	3.0 (6.6)	3.0 (6.6)	6.0 (13.2)
	Gross	kg (lb)	4.0 (9.9)	4.0 (9.9)	9.5 (20.9)

LOW STATIC SLIM DUCT			KM09HFDI	KM12HFDI	KM18HFDI	KM21HFDI	KM24HFDI
Power Supply	V/Hz/Ph		208-230 / 60 / 1 (powered by the outdoor unit)				
Capacity	Cooling	BTU/hr	8533	11946	15359	20478	24232
	Heating	BTU/hr	9556	13140	18772	22526	27304
Energy Star®	—		NO	NO	NO	NO	NO
Moisture Removal Capacity	L/hr (pt/hr)		0.80 (1.69)	1.40 (2.96)	1.80 (3.80)	2.50 (5.28)	2.50 (5.28)
Airflow Volume	m³/hr (CFM)		450 / 300 / 250 (265 / 177 / 147)	500 / 400 / 300 (294 / 235 / 177)	700 / 600 / 500 (412 / 353 / 294)	1000 / 750 / 550 (589 / 441 / 324)	1000 / 750 / 550 (589 / 441 / 324)
Sound Pressure Level	dB(A)		37 / 34 / 31	39 / 35 / 32	41 / 37 / 33	42 / 38 / 34	42 / 38 / 34
Rated External Static Pressure	Pa (in.w.g)		10 (0.04)	10 (0.04)	10 (0.04)	15 (0.06)	15 (0.06)
Dimensions	Width	mm (in)	700 (27-3/4)	700 (27-3/4)	900 (35-3/8)	1100 (43-3/8)	1100 (43-3/8)
	Height	mm (in)	615 (24-1/4)	615 (24-1/4)	615 (24-1/4)	615 (24-1/4)	615 (24-1/4)
	Depth	mm (in)	200 (7-7/8)	200 (7-7/8)	200 (7-7/8)	200 (7-7/8)	200 (7-7/8)
Weight	Net	kg (lb)	22 (48.5)	23 (50.7)	27 (59.5)	31 (68.3)	31 (68.3)
	Gross	kg (lb)	27 (59.5)	29 (63.9)	36 (79.4)	41 (90.4)	41 (90.4)

HIGH STATIC SLIM DUCT			KM09HF1DI	KM12HF1DI	KM18HF1DI	KM21HF1DI
Power Supply	V/Hz/Ph		208-230 / 60 / 1 (powered by the outdoor unit)			
Capacity	Cooling	BTU/hr	9000	12000	18000	24000
	Heating	BTU/hr	9500	13000	19000	27000
Energy Star®	—		NO	NO	NO	NO
Moisture Removal Capacity	L/hr (pt/hr)		0.80 (1.69)	1.40 (2.96)	1.80 (3.80)	2.50 (5.28)
Airflow Volume	m³/hr (CFM)		550 / 430 / 360 / 320 (324 / 253 / 212 / 188)	600 / 490 / 420 / 360 (353 / 288 / 247 / 211)	1000 / 700 / 530 / 490 (588 / 412 / 312 / 288)	1250 / 950 / 770 / 690 (735 / 559 / 453 / 406)
Sound Pressure Level	dB(A)		36 / 30 / 27 / 25	38 / 35 / 30 / 26	39 / 33 / 29 / 26	42 / 36 / 32 / 28
Rated External Static Pressure	Pa (in.w.g)		60 (0.24)	60 (0.24)	90 (0.36)	90 (0.36)
Dimensions	Width	mm (in)	830 (32-43/64)	830 (32-43/64)	1130 (44-31/64)	1130 (44-31/64)
	Height	mm (in)	754 (29-11/16)	754 (29-11/16)	754 (29-11/16)	754 (29-11/16)
	Depth	mm (in)	300 (11-13/16)	300 (11-13/16)	300 (11-13/16)	300 (11-13/16)
Weight	Net	kg (lb)	32 (70.6)	32 (70.6)	42 (92.6)	42 (92.6)
	Gross	kg (lb)	38 (83.8)	38 (83.8)	48.5 (106.9)	48.5 (106.9)

Affordable comfort you can trust from the world's largest manufacturer of air conditioners.



Web: [kinghomecanada.com](http://kinghomecanada.com)  
 E-mail: [info@kinghomecanada.com](mailto:info@kinghomecanada.com)  
 Tel: +1 888-909-4835  
 Add: 40 Great Gulf Dr unit 39, Vaughan, ON L4K 0K7

Authorized dealer