



Owner's Manual

Original Instructions

Thermostat

Model:

WK-010WD1



KINGHOME PLUS



App Guide

Thank you for choosing this product. Please read this Owner's Manual carefully before operation and retain it for future reference.

To Users

Thank you for selecting KINGHOME product. Please read this instruction manual carefully before installing and using the product, so as to master and correctly use the product. In order to guide you to correctly install and use our product and achieve expected operating effect, we hereby instruct as below:

- (1) This appliance is not intended for use by persons (including children) with reduced physical, sensory or mental capabilities, or lack of experience and knowledge, unless they have been given supervision or instruction concerning use of the appliance by a person responsible for their safety. Children should be supervised to ensure that they do not play with the appliance.
- (2) This instruction manual is a universal manual, some functions are only applicable to particular product. All the illustrations and information in the instruction manual are only for reference, and control interface should be subject to actual operation.
- (3) In order to make the product better, we will continuously conduct improvement and innovation. If there is adjustment in the product, please subject to actual product.
- (4) If the product needs to be installed, moved or maintained, please contact our designated dealer or local service center for professional support. Users should not disassemble or maintain the unit by themselves, otherwise it may cause relative damage, and our company will bear no responsibilities.

Contents

1 Safety Notices (Please be sure to abide)	1
2 User Notice	1
3 Installation Instructions	1
3.1 Installation Requirements	2
3.2 Wiring Instructions	3
3.3 Installation Steps.....	3
3.4 Removal Steps.....	4
4 Homepage Display	4
5 Function Instructions	5
5.1 Control of Homepage.....	5
5.2 Weekly Schedule Page	6
5.3 Function Page.....	7
5.4 App Control	7

1 Safety Notices (Please be sure to abide)



WARNING: If not abide them strictly, it may cause severe damage to the unit or the people.



NOTE: If not abide them strictly, it may cause slight or medium damage to the unit or the people.



This sign indicates that the items must be prohibited. Improper operation may cause severe damage or death to people.



This sign indicates that the items must be observed. Improper operation may cause damage to people or property.



WARNING!

This product can't be installed at corrosive, inflammable or explosive environment or the place with special requirements, such as kitchen. Otherwise, it will affect the normal operation or shorten the service life of the unit, or even cause fire hazard or serious injury. As for the above special places, please adopt special air conditioner with anti-corrosive or anti-explosion function.

2 User Notice

- (1) Make sure communication wire is connected with the proper port, otherwise there may occur communication error.
- (2) Never knock on, throw or frequently detach the thermostat.
- (3) Never operate the thermostat with wet hands.
- (4) Never scratch the screen of thermostat by hard or sharp objects.
- (5) The operating temperature range for the thermostat is 0~48°C.

3 Installation Instructions

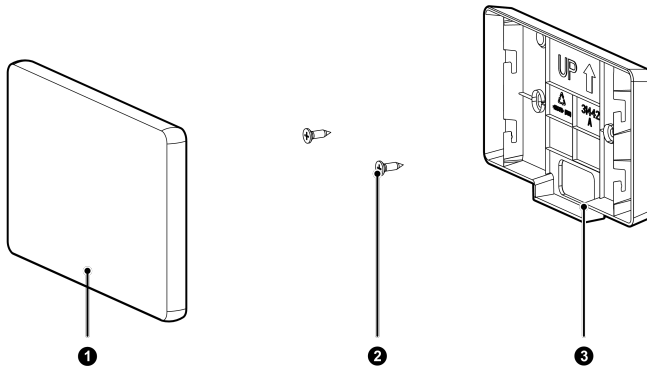


Figure 3.1 Parts of Thermostat

No.	①	②	③
Name	Touch screen of thermostat	Tapping screw (for fixing the rear cover of thermostat on the wall)	Rear cover of thermostat
Quantity	1 piece	2 pieces	1 piece

Unit: mm

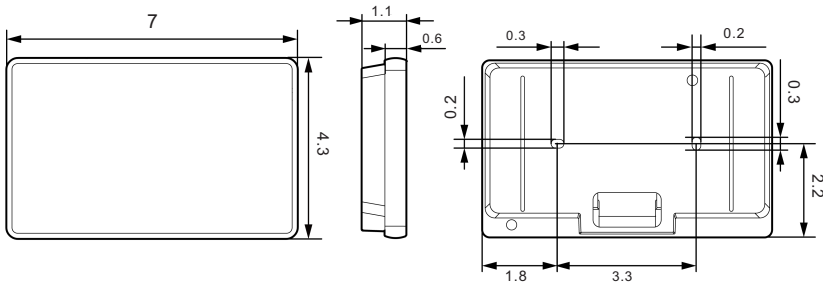


Figure 3.2 Dimension of Thermostat

3.1 Installation Requirements

Never install the thermostat in the following places:

- (1) Places with corrosive gas or serious dust, salt mist or oil smoke.
- (2) Wet and damp places, or with direct sunlight.
- (3) Places near high temperature objects or places where units might be splashed by water.

3.2 Wiring Instructions

3.2.1 Wire Selection

Cord length L(feet)	Cord size (mm ² /AWG)
L≤164	2×0.3mm ² ~2×0.8mm ² (2×AWG22~2×AWG18)



Attention:

- (1) The communication cords must use light/ordinary polyvinyl chloride sheathed cords. If the thermostat is installed in a place with strong electromagnetic interference, communication cords of thermostat must use shielded cords.
- (2) The cords of the thermostat must be selected according to the requirements of this manual, and it is strictly prohibited to choose the communication cords that does not meet the requirements of this manual.
- (3) It's recommended that the length of communication cords should be 8m.
- (4) It's recommended to use AWG18 cords as power cords.

3.2.2 Wiring Ports

Port printing	H1, H2	C, R
Meaning	Communication port of thermostat	Power port
Port parameter	RS485	24VAC

3.3 Installation Steps

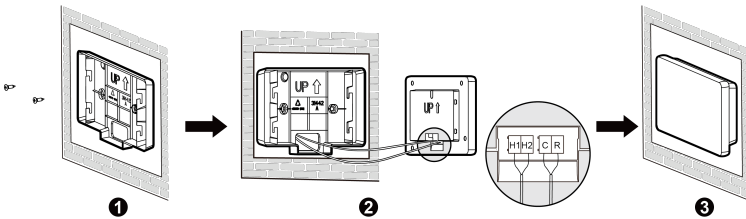


Figure 3.3 Installation Diagram

Please use the following steps to complete installation:

- (1) Cut off the power supply by using the master switch or circuit breaker box. The power must be cut off during the whole installation process for your safety.
- (2) During installation, be careful not to damage to touch screen.
- (3) In step ①, fix the rear cover of electric box on the wall with 2 screws.

- (4) In step ②, connect the communication wire to H1 and H2 terminals, and connect the 24VAC power cord to C and R terminals.
- (5) In step ③, insert the screen into the rear cover and slide down to clip.

3.4 Removal Steps

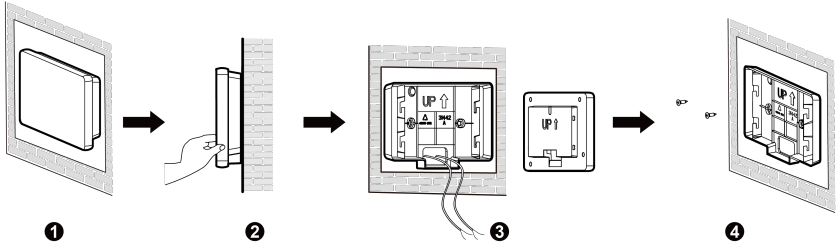


Figure 3.4 Removal Diagram

Please use the following steps to complete removal:

- (1) In step ②, slide up to remove the screen from the rear cover of the thermostat using your hands.
- (2) In step ③, remove the communication cord and power cord from the screen of the thermostat.
- (3) In step ④, remove 2 screws for fixing the rear cover of electric box.

4 Homepage Display

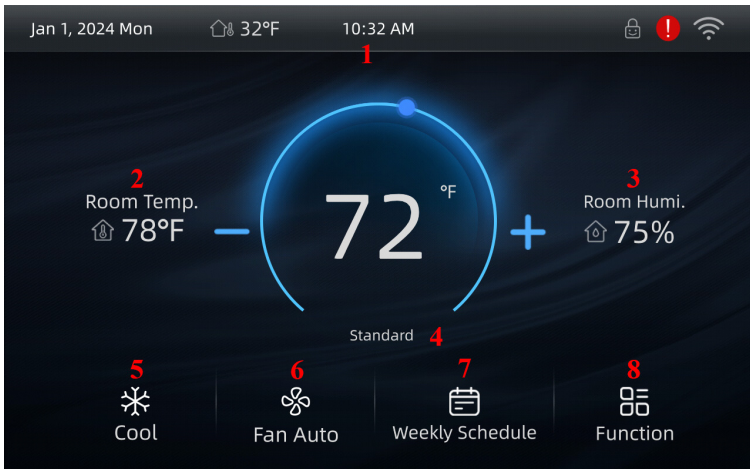


Figure 4.1 Display of Homepage

No.	Name	Instruction
1	Homepage status bar	<ul style="list-style-type: none"> ● The current system date is displayed on the left and the current time is displayed in the middle. ● The outdoor temperature is displayed between the current system date and the current time. ● WiFi, error function and child lock icons are displayed on the right.
2	Room temperature	View the current room temperature
3	Room humidity	View the current room humidity
4	Fuel mixing mode	View the fuel mixing mode
5	Mode button	Click to set the mode
6	Fan button	Click to set the fan to automatically open or always open
7	Weekly schedule button	Click to enter the weekly schedule setting page
8	Function page button	Click to enter the function page

5 Function Instructions

5.1 Control of Homepage



Figure 5.1 Homepage

(1) Mode setting

Click the Mode button to select the mode.

(2) Temperature setting

Slide the circular sliding bar or click the "+" or "-" button to adjust the set temperature value.

(3) Fan setting

Click the fan icon button to set the fan to automatic or always on state.

(4) Error query

When the indoor unit occurs error, the error icon "!" will appear. You can click the icon to view the detailed error information.

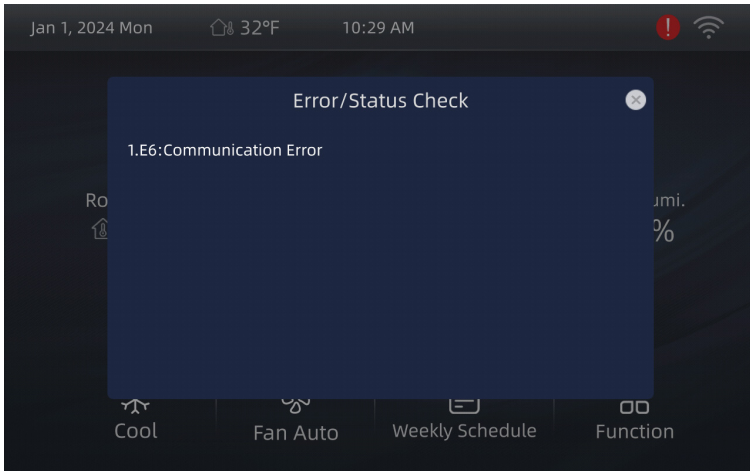


Figure 5.2 Error Query Page

5.2 Weekly Schedule Page

On the homepage, click the "Weekly Schedule" button to enter the weekly schedule page and set the weekly schedule function. You can set four weekly schedule modes, such as "Wake", "Leave", "Return" or "Sleep". Using this function will help the user save on energy bills.

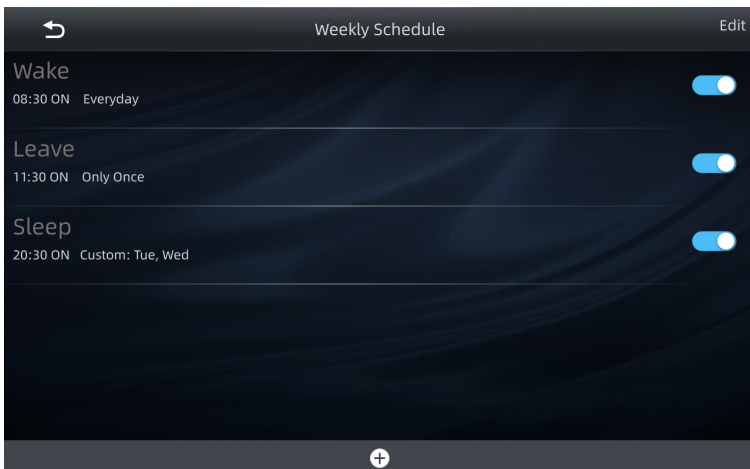


Figure 5.3 Weekly Schedule Page

5.3 Function Page

On the homepage, click the Function button to enter the function page.

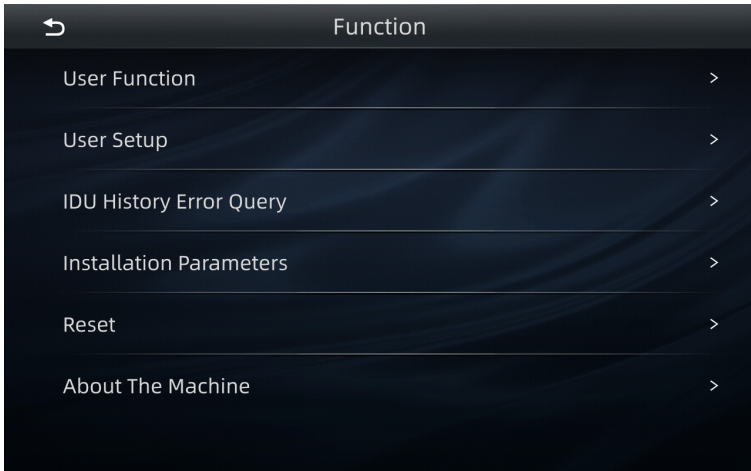


Figure 5.4 Function Page

You can set the relevant parameters of user function, set the parameters of the machine, query the historical fault information, and restore the installation parameters to the factory, etc.

5.4 App Control

The "KINGHOME PLUS" App can be used to remotely control the thermostat.

- (1) Please scan the QR code on the cover or search for "KINGHOME PLUS" in the Apple App Store or Google Play Store to download.
- (2) After the "KINGHOME PLUS" App is installed, new users will need to register an account and add the device to achieve WiFi control and LAN control of KINGHOME smart home appliances.
- (3) When using the App for the first time, please reset the WiFi. The steps are as follows:
 - 1) Enter the function page from the homepage, then click the "User Setup".
 - 2) Click "WiFi Reset" and click "Confirm" on the WiFi reset page to reset the WiFi.
 - 3) Add the desired device to the App.

NOTES:

- (1) If router's name and password have been changed, please reset WiFi and add the device again.
- (2) WiFi networking performance is related to the distance between the thermostat and the router and the obstacles between them. During the installation process, the distance between the thermostat and the router should be as close as possible, and the obstacles should be as little as possible. If the WiFi signal is not good, use the WiFi signal enhanced router. The specific situation depends on the actual installation.
- (3) For more information, please refer to "Help" in App.



66139909913